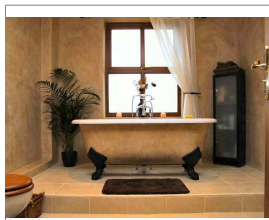


Mike Wye & Associates

Suppliers of Natural Building and Decorating Products

sales@mikewye.co.uk Telephone; 01409-281644 www.mikewye.co.uk



Safflower Oil

Product Information 370-371

Naturfarben GmbH

GENERAL:

Safflower Oil is a natural drying oil extracted from seeds of the safflower (*carthamus tinctorius*). Among the drying oils, safflower oil is the least yellowing. Therefore, it is used in varnishes and paints requiring this property. In the food industry safflower oil is used for instance in dietary margarine.

USAGE:

Interior – for timber surface treatment. Outstandingly suitable to improve durability of Casein Marble Powder Paints. Being washable, it can be used for the manufacture of dispersion paints in standardised batches.

INGREDIENTS:

Pure Safflower Oil.

APPLICATION:

Surface to be dry, clean, free of oil and grease, absorbent.

SURFACE TREATMENT OF WOOD:

In order to reduce drying time, add 5% siccativ (paint dryer – see info and prod. no. 435) to the safflower oil, e.g. 1 litre Safflower Oil + 50ml siccativ. Preferably leave overnight. The undiluted safflower oil mix to be applied thinly and evenly with a paint brush or lint-free cloth. Excessive coating to be avoided and after 30 – 45 minutes penetration time any excess oil to be removed with a dry, lint-free cloth.

For the treatment of larger surface areas it is recommended to dilute the siccativated safflower oil with balsamic turpentine oil (prod. no. 447) at a ratio of 1 : 1 for easier spreading.

An alternative solvent free method for large areas would be the application of heated (80 degrees C) safflower oil – again applied thinly.

DISPERSION PAINTS:

Below some advice for the inclusion of safflower oil in casein marble powder paint:

5 – 10% safflower oil (relative to powder paint): recommended as top coat on dispersion paints, e.g. alkaline latex paints, as a tension reducing additive. For maintaining whiteness, the addition of 5% Titanium white is advisable.

10% and more, i.e. from 1 litre safflower oil onwards per 10kg powder, a pronounced increase in durability and wear properties is achieved. For maintaining whiteness, the addition of 5% Titanium white is advisable.

30% and more (relative to powder paint): washable wall paint. However, 10% Titanium white will be required to ensure covering properties.

The reason for adding Titanium white is the fact that calcium carbonates (chalk, marble powder) contained in the wall paint become transparent and off-white when in contact with oily binding agents.

Example (washable wall paint):

First mix Titanium white with a little water.

10kg Casein marble powder paint (powder) + 500 – 1000g Titanium white to be mixed in 5 litres of water – let soak for 30 minutes. Add 3 litres safflower oil and mix in gradually in a thin stream. Leave for 15 minutes, stir thoroughly. Add 0,75 – 1 litre water – dilute.

WORK PROCEDURES:

Stained areas (water, soot, nicotine, paints, etc.) are to be covered with shellac isolating primer (prod. no. 234). Heavily absorbent areas need to be prime coated with diluted paint. Thin 2 parts of ready mixed paint with 1 part of water.

1. Marble powder paint (+ titanium white if needed) to be mixed with water as per Instructions on packing label, leave for 30 minutes minimum and stir thoroughly again.
2. Only now is the safflower oil to be added in a thin stream and stirred.
3. Dilute until paintable. With above mentioned examples, a further 15% - 20% of the water required for mixing the marble powder paint can be used for dilution without any problems. On heavily absorbent surfaces like clay render, the paint may have to be further diluted, with care. Test coats on the surface are advisable. (Paint which is too thick causes clotting!)
4. Suitable tools are rollers and wide brushes.

COVERAGE:

For timber surface treatments – 1 litre for approx. 20m², depending on porosity of wood.

PACKAGE SIZES:

Prod. No. 370 1 litre

Prod. No. 371 5 litres

For prices please see latest price list.

DRYING TIMES:

Timber surface treatment (with 5% siccative):
approx. 24 hours at 20°C. Wall paints: re-paintable after 24 hours. Optimum durability is achieved after 3 – 4 weeks (drying time of oil!).

STORAGE:

Usable for several years if stored airtight in cool, dry, and frost-free conditions.

CLEANING OF TOOLS:

Clean tools immediately after use with warm water and mild soap, e.g. Marseille soap (Prod. No. 223). Oily paint brushes might require cleaning with balsamic turpentine oil (Prod. No. 447).

*** DISPOSAL OF RESIDUES:**

Do not pour left-overs into drain, but store in air-tight container for later use.

*** MARKINGS:**

Not applicable, non-hazardous.

NOTE:

Due to drying oil content there is a danger of self ignition of rags. Soaked rags and wiping cloths to be spread out in outdoor areas for drying or to be stored in closed, fire proof containers (tin or glass), out of the reach of children.

Observe potential allergies against natural materials.

The above information has been compiled in accordance with the best of our experience and knowledge. Owing to the application methods and environmental influences, as well as the various surface properties, no liabilities or legalities pertaining to the individual recommendations can be entertained. Prior to application, the suitability of the product is to be tested (trial coat). The validity of the text ceases with revisions or product modifications.

(04/2000)