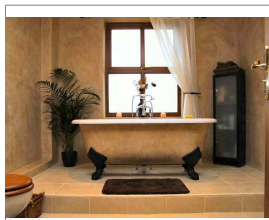


# Mike Wye & Associates

Suppliers of Natural Building and Decorating Products

[sales@mikewye.co.uk](mailto:sales@mikewye.co.uk) Telephone; 01409-281644 [www.mikewye.co.uk](http://www.mikewye.co.uk)



Wood Lazure

Exterior Product Information 320-324

Naturfarben GmbH

## GENERAL:

Preventative wood protection, i.e. every measure to keep wood dry and, in the long term, to prevent exposure to prolonged humidity, is the most natural protection. As early as in the planning stages should details such as adequate roof overhang, dripping points and ventilation of enclosures be considered. Equally important is the diffusibility of coatings as a sealing of timber always results in a moisture trap. If a sealed coating cracks one can actually regard it as luck, as entrapped water under the sealant would certainly lead to wood decay.

If untreated wood is to be exposed to energy rich UV light and weather, the suitability and quality of the type of timber must be taken into account. Certain timbers do not require treatment. They form their own thin protection skin and become grey. The deliberate greying (silvering) is a method closest to natural protection. As a preventative protection against mildew and insect attack, Boron Salt, mined in the salt deserts of Nevada, is suitable.

## USAGE:

Surface treatment for all exterior timbers, especially window frames, claddings, trellis work, fences, garden furniture, toys, etc. In order to prevent a greying of the wood through UV radiation, 15% non-fading pigments should be added. For interior use on wood, the lazure may be applied clear or pigmented. The lazure is not suitable for wooden floors.

Already lacquered surfaces or those treated with water soluble primers and paints may not be coated with this wood lazure.

Temperature at application to be minimum 10oC.

Moisture content of wood not to be in excess of 15%.

## PROPERTIES:

- .. dirt and water repellent
- .. weatherproof
- .. elastic
- .. steam diffusible
- .. easily applied
- .. very economical

**INGREDIENTS:**

Linseed oil, wood oil–stand oil (aged oil), linseed oil–stand oil (aged oil), twice rectified balsamic turpentine oil, zinc colophony, lead-free drying agents.

**PREPARATIONS:**

To prevent greying of the wood at least 10% pigment is required. First mix the pigments (100-200g per litre thoroughly with a little lazure. This procedure is called wetting or pasting and must be done with care. Add the remaining lazure to the pigments whilst operating a mixing rod.

Exterior wood should first be prime coated once with Base Oil (Primer) prod. no. 301-302. The wood should be clean, dust-free and completely dry.

**APPLICATION:**

Apply lazure thinly and evenly on wood with a suitable paint brush. After approx. 15 min. remove any excesses (runners and drops) with a lint-free cloth, thus avoiding sticky and glossy patches. Only when completely dry may the second coat be applied. The pigmentation for this second coat may be identical to the first coat or may be reduced by 5 – 10%. Here again a thin and even application of the lazure is important, as is the removal of any excesses. For maximum protection of woods that are constantly exposed to weather, a third coat with less pigments, or a clear lazure, is recommended.

**AFTER TREATMENT:**

Depending on exposure and wear, post treatments are required. At the latest at signs of dullness or even chalky appearances, a renovation coat is to be performed. Clean surface with a soapy solution and sand down if necessary. Thereafter, and if the overall appearance is satisfactory, one clear coat will be sufficient. In case of deteriorated patches, a pigmented coat will be necessary.

**\* TINTING:**

Depending on exposure and wear, post treatments are required. At the latest at signs of dullness or even chalky appearances, a renovation coat is to be performed.

Clean surface with a soapy solution and sand down if necessary. Thereafter, and if the overall appearance is satisfactory, one clear coat will be sufficient. In case of deteriorated patches, a pigmented coat will be necessary.

**COVERAGE:**

Depending on the absorption properties of the surface,  
15 – 20 m<sup>2</sup> per litre

**PACKAGE SIZES:**

Prod. No. 320 0,75 l

Prod. No. 324 2,5 l

Prod. No. 321 5 l

For prices please refer to our latest price list

**DRYING TIMES:**

Approx. 24 hours at 20°C.

High humidity and low temperatures will retard the drying process.

**STORAGE:**

Wood lazure is usable for many years if stored cool, dry, frost-free and in sealed containers.

**NOTE:**

Due to the linseed oil content a danger of self-ignition of soaked rags exists!

Soaked rags to be spread out and dried in the open air, or to be stored in a closed, fireproof container (glass jar or tin)

Ventilate well during application and keep away from open flames. Tools may be cleaned with a soap solution or, if lazure has dried, with balsamic turpentine oil.

Do not pour left-overs into waste water system.  
Store out of reach of children.

The above information has been compiled in accordance with the best of our knowledge and experience. Owing to application methods and environmental influences, as well as different surface properties, no liabilities or legalities pertaining to the individual recommendations can be entertained. Prior to application, the suitability of the product is to be tested (trial coat). The validity of this text ceases with revisions or product modifications.

(11/1999)