

This certificate is valid for Building Regulations & associated technical guidance in force on the date of registration and for the regulations in the countries indicated

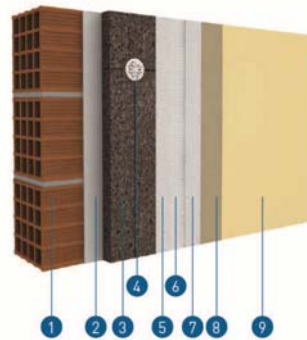
Secil Argamassas SecilVit CORK system

Description of Product

This is an assessment of Secil Argamassas SecilVit CORK system, an external thermal insulation system which links the superior thermal performance of an ETICS system with an efficient environmental performance.

“SecilVit CORK” is a bonded system with supplementary mechanical fixings used primarily to provide stability until the adhesive has dried and to increase the adherence of the system reducing the risk of detachment. The ETICS comprises components which are factory produced by the manufacturer or a supplier; it is made up on site from these components.

This system is designed and installed in accordance with the manufacturer’s design and installation instructions. The manufacturer is ultimately responsible for the ETICS.



LEGEND

- 1 Substrate
- 2 ADHERE Vit ecoCORK
- 3 Cork Insulation Panel
- 4 SecilVit Anchor
- 5 ADHERE Vit ecoCORK
- 6 SecilVit Mesh 160
- 7 ADHERE Vit ecoCORK
- 8 REABILITA CAL Acabamento (Finishing)
- 9 SecilTEK ad 25 (Primer)
+ SecilTEK SP 01 (Silicate based paint)



Key Factors Assessed

- Safety in case of Fire
- Health, Hygiene and Environmental
- Safety in Use
- Energy Economy and heat retention

Validity

This certificate was first issued on 20th April 2015 and is valid until 20th April 2019

Issue Dated 25th August 2016

Scope of Registration

This is an assessment of a specified and accredited insulation and render EWI system for various substrates on various house types to improve the thermal efficiency of low rise domestic properties defined as an External Thermal Insulation Composite System (ETICS).

This ETICS is intended to be used as external and internal thermal insulation of building walls. The walls are made of masonry (bricks or blocks) or concrete (cast on site or as prefabricated panels) with a reaction to fire classification A1 to A2-s2,d0 according to EN 13501-1 or A1 according to the EC decision 96/603/EC as amended. The ETICS is designed to give the wall to which is applied satisfactory thermal insulation.

The ETICS is made of non-load bearing construction elements. It does not contribute directly to the stability of the wall on which is installed, but it can contribute to its durability by providing enhanced protection from the effect of weathering. The thermal resistance of the ETICS shall be $\geq 1,0 \text{ m}^2 \text{ K/W}$.

This ETICS can be used on new or existing (retrofit) vertical walls. It can also be used on horizontal or inclined surfaces which are not exposed to precipitation. The ETICS is not intended to ensure the air tightness of the building structure.

Design and installation of ETICS should take into account the principles laid down in chapter 7 of ETAG 004 and shall be done in accordance with national instructions.

This assessment covers the application of bonded ETICS where the concrete for testing of bond strength is representative for masonry or concrete. For bonded applications onto other substrates (e.g. organic paints or ceramic tiles), testing on the job site is necessary.

The provisions made in this assessment are based on an assumed working life of at least 25 years, provided that the conditions laid down for the installation, appropriate use, maintenance and repair are met.

The indications given on the working life cannot be interpreted as a guarantee given by the producer, but are to be regarded only as a means for choosing the right product in relation to the expected economically reasonable working life of the works.

The final painting scheme must be based on silicates or water, with high permeability to water vapour such as SecilTEK AD 25 (Silicate based primer) - TC.E.096.1 EN or SecilTEK SP 01 (Silicate based paint) - TC.E.097.1.EN as recommended by the manufacturer.

Conditions of Certificate

Protection must be provided when applying this system in rain or other inclement weather.

Application should cease at ambient temperatures below 5°C and above 30°C.

Site specific specification to be provided in accordance with regional wind speed, exposure zone and building height.

Any installer of the system must either be approved by the manufacturer or be able to demonstrate evidence of experience in installing external wall insulation and render systems.

For LABC Warranty purposes:

Can be used as an external or internal insulation component on concrete or masonry walls only. Not approved for Timber frame, Steel frame or ICF structures.

For use in Warranty conversion projects; the installer of the system must be approved by the manufacturer or UK distributor as an approved contractor. Otherwise the installer must provide evidence of experience in installing external wall insulation and render systems.

That the recommendations within the ETA certificate are followed and the certificate remains current and not withdrawn at the time of the warranty application.

Only the materials specified in the ETA certificate must be used. Use of some alternative products, mesh, renders or paints will not be acceptable.

The insulation system is accepted for use under Warranty applications for projects located in sheltered or moderate exposure zones. The height of the walls must not exceed 2 stories (including the ground storey) and room in the roof gables however, can be used externally in medium height buildings less than 28m.

The board must only be fixed to the substrate using a full spread of base coat (Dabs are not acceptable for Warranty purposes)

The surfaces of the substrate wall must be clear of paint or other finishes and be in a sound and damp free condition.

LABC consider that, Secil Argamassas SecilVit CORK System, will meet the functional requirements of the Building Regulations (listed below) if the criteria detailed in this certificate are met;



The Building Regulations 2010 (as amended) England & Wales

AD A	Structure Design for wind loading and self-weight only.
AD B Note:	Fire Safety The reaction to fire was tested according to EN 13823:2002 and EN 11925-2:2002 and classified according to EN 13501-1:2007+A1:2009. The ETICS meets the requirements of class B-s1, d0 according to EN 13501-1:2007+A1:2009.
AD C Note:	Site preparation and resistance to contaminants and moisture Subject to limitations detailed below in Conditions section.
AD L1B Note:	Conservation of fuel and power The thermal insulation performance of this system should be considered in the context of the contribution made to the overall performance of the element of the building.



The Building Regulations 2010 (as amended) England

AD L1A Note:	Conservation of fuel and power The thermal insulation performance of this system should be considered in the context of the contribution made to the overall performance of the element of the building.
-----------------	---



The Building Regulations 2010 (as amended) Wales

AD L1A - Conservation of fuel and power Note:	The thermal insulation performance of this system should be considered in the context of the contribution made to the overall performance of the element of the building.
--	---



The Building (Scotland) Regulations 2004 (as amended)

If you would like to discuss a specific use of the product in Scotland it will require an additional assessment under the Scottish Building Regulations and accordingly you should contact the LABSS STAS Administrator at www.labss.org

Non-Regulatory Information



LABC Warranty

LABC Warranty conditionally accepts the use of SecilVit CORK System, when installed and used in accordance with the Scope and Conditions of this Certificate. Visit www.labcwarranty.co.uk for our LABC Warranty Technical Manual requirements and Warranty conditions of acceptance.

Supporting Documentation

European Technical Assessment - ETA 14/0200

SecilVit CORK System Application Manual - TC.E.095.1 EN

SecilVit CORK external thermal insulation system, 100% natural

ADHERE Vit ecoCORK Mortar - TC.E.087.1

REABILITA CAL Finishing Mortar (NHL based) - TC.E.062.1 EN

Contact Information

Secil Argamassas

Apartado 2

2406-909 Maceira

Leiria

Portugal

Tel: 00 351 244 770 220

Email: comercial@secilargamassas.pt

Web: www.secilargamassas.pt